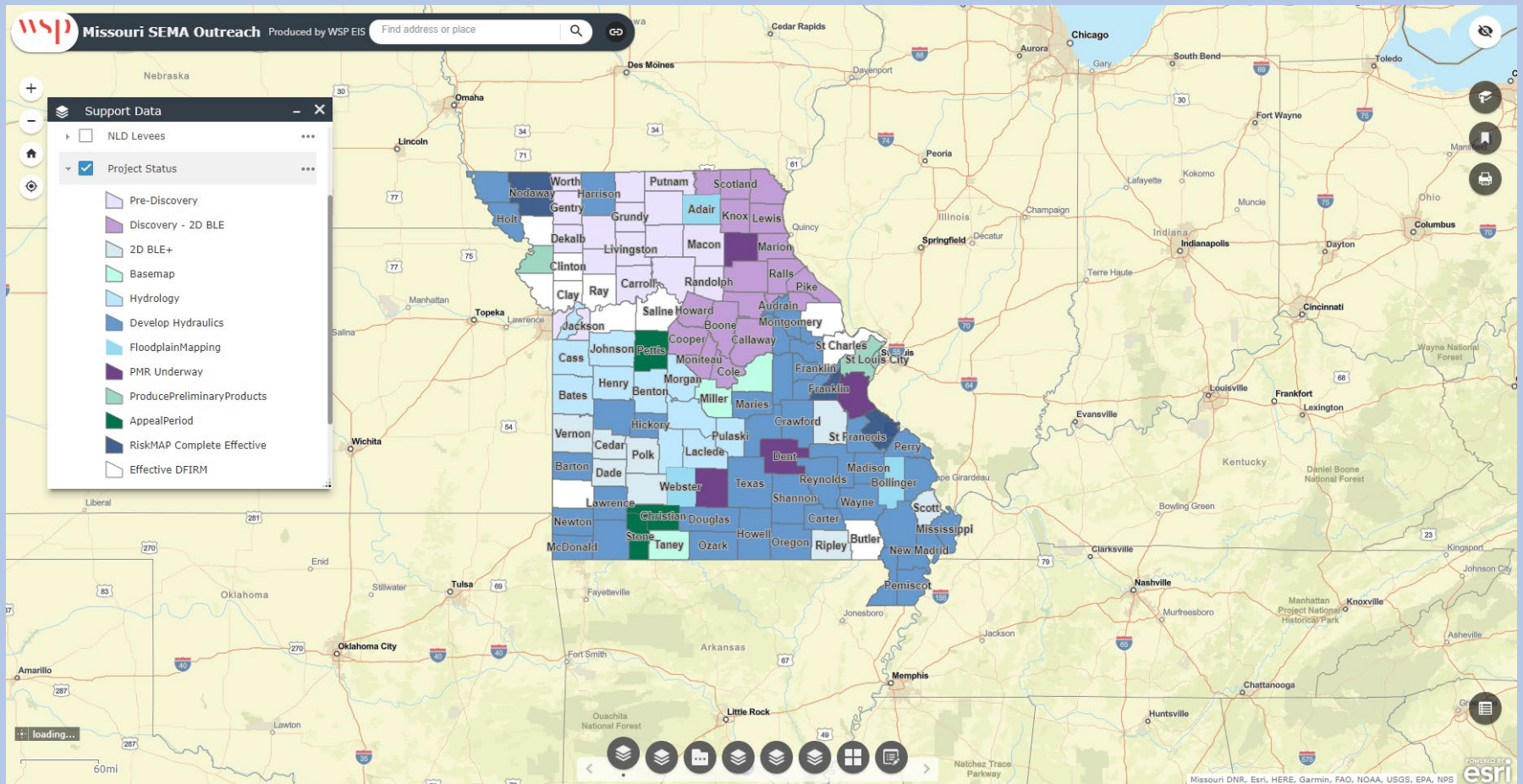


# User Guide: Missouri SEMA Outreach Site





# Missouri SEMA Outreach Site User Guide

**This User Guide gives technical guidance for the Missouri SEMA outreach website located at <http://bit.ly/MOSEMAOutreach>. This guide also gives a general overview of the content of the layers within the Web-map.**

## Table of contents

Missouri SEMA Outreach Website Information.....	3
Missouri SEMA Outreach Website Layout.....	4
Layer Lists.....	5
Layer List – Exploring Individual Layers .....	6
Layer List – Data Development .....	7
Layer List – Layer Zoom Extent .....	8
Change Basemap.....	9
Enable Pop-ups and Label Options.....	10
Attribute Table .....	11
Adding Comments.....	12
Layer List Content – Support Data.....	13
Layer List Content – Data Development.....	14
Layer List Content – Preliminary Data .....	15
Layer List Content – Effective Data.....	16
Layer List Content – WSEL Rasters.....	17

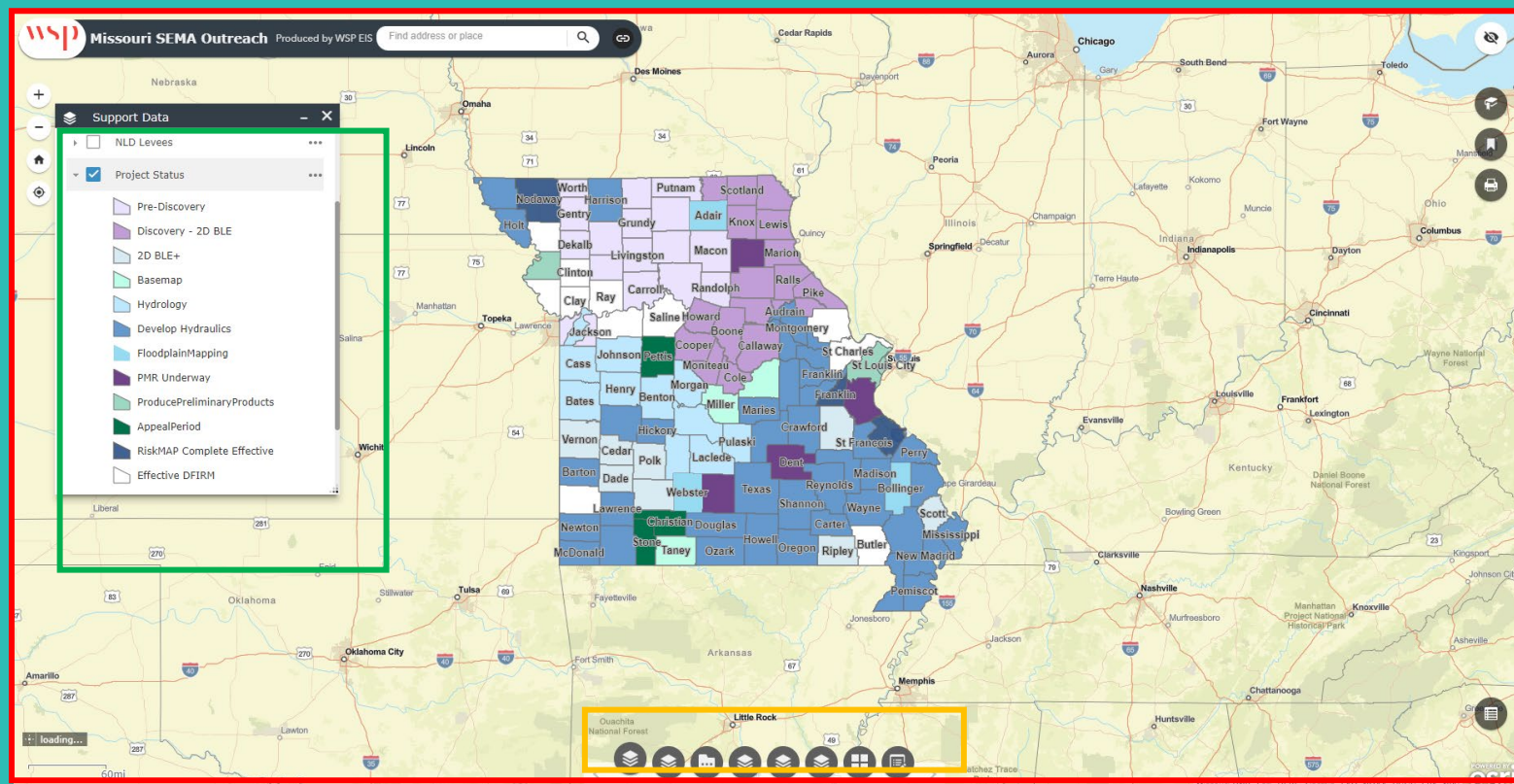


## Missouri SEMA Outreach Website Information

- Many counties across the State of Missouri are in the process of a floodplain mapping project. An important part of the process is ongoing communication between SEMA, local community officials, floodplain managers, planners, residents, and other stakeholders. This helps to ensure the updated maps are as accurate as possible and helps communities prepare for future changes that impact local floodplain management.
- To facilitate ongoing communication, SEMA provides an Outreach Website that allows the public to view floodplain maps and supporting data throughout the life of the project. The website provides a user-friendly way to submit feedback online. The data can be viewed in any website browser (e.g. Internet explorer, Chrome, Mozilla Firefox) and can also be viewed with mobile devices (IOS, Android).
- Missouri SEMA Outreach for web browser: **<http://bit.ly/MOSEMAOutreach>**



## Missouri SEMA Outreach Website Layout

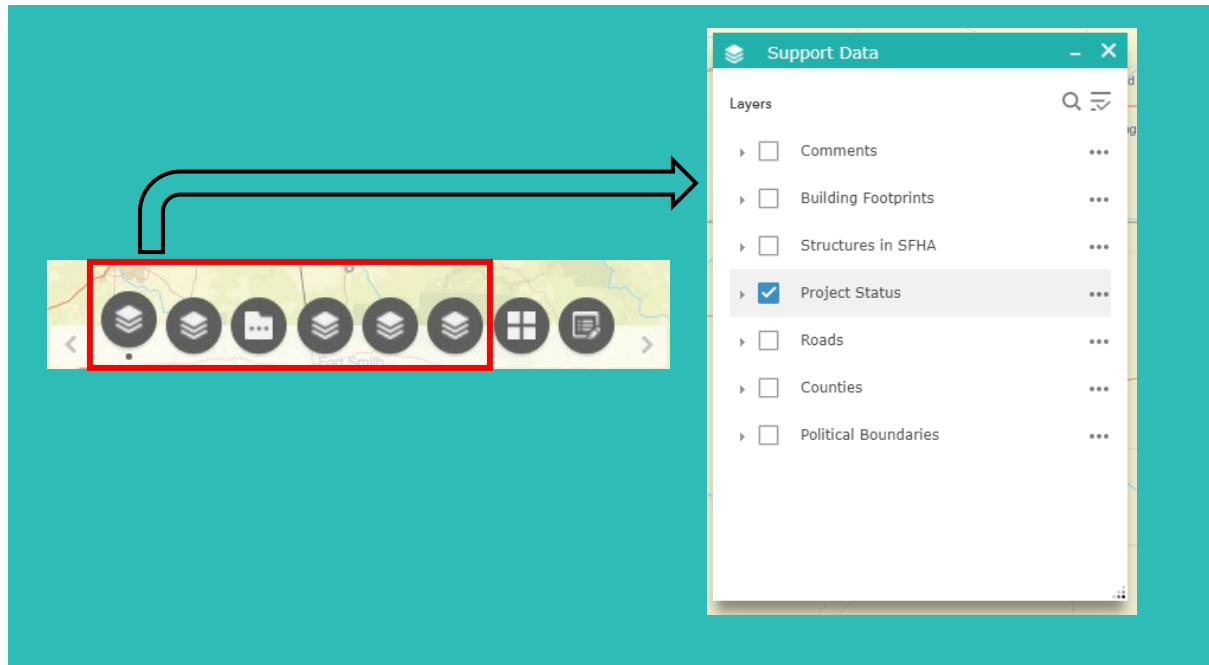


Traveling to the Missouri SEMA Outreach Website at <http://bit.ly/MOSEMAOutreach> will lead you to this default view. It may take a few moments for this data to load. At the bottom-center of the **Map Frame** are **multiple options**. These options are all explained later in this User Guide.

The **Support Data Layer List** window will be opened by default, and the **“Project Status”** layer will be turned on.



## Layer Lists



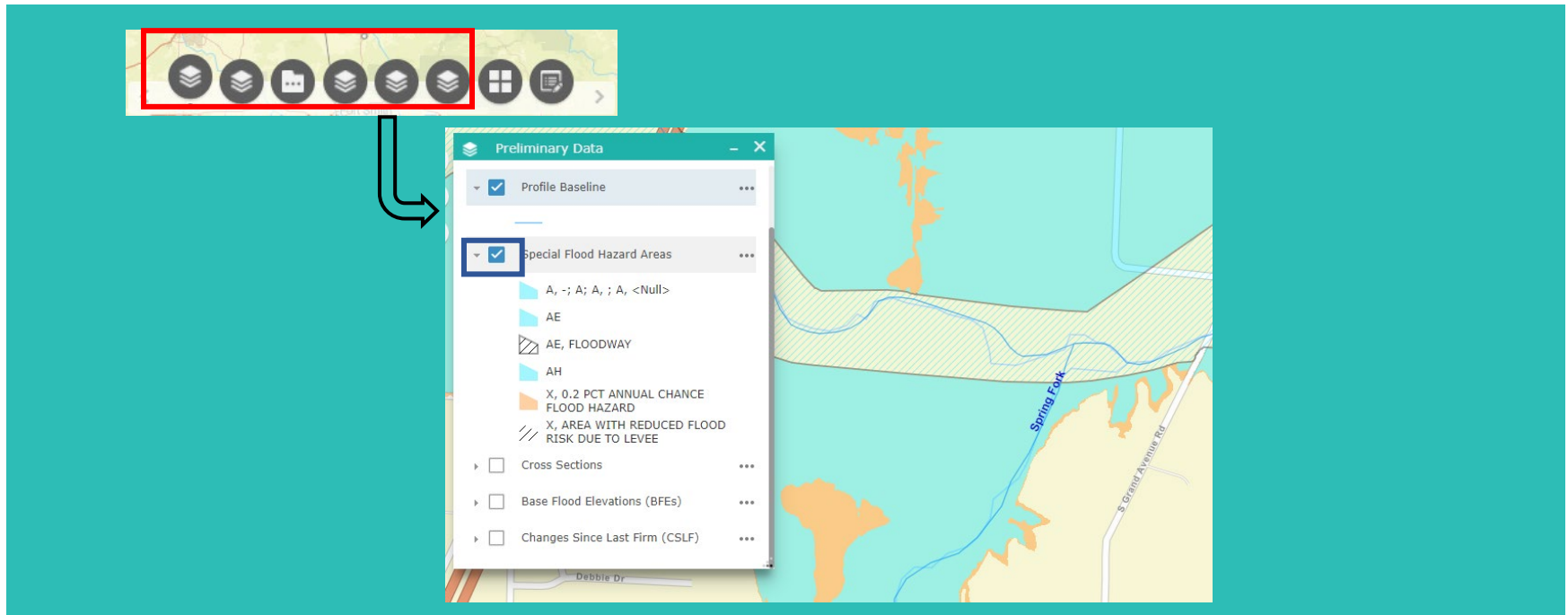
Open different **Layer Lists** by clicking on its **Layer List Icon** at the center-bottom of the Map Frame. This will open the associated Layer List's window.

There are 5 different Layer Lists: **Support Data, Data Development, Preliminary Data, Effective Data, and WSEL Rasters**. Refer to the Layer List Content section of this user guide for more information on what each of these Layer Lists contain

The Legend displays symbology information for all layers that are currently turned on and are visible.



## Layer List – Exploring Individual Layers



Each **Layer List Box** contains multiple layers. In this screenshot, we have opened the Preliminary Data layer List.

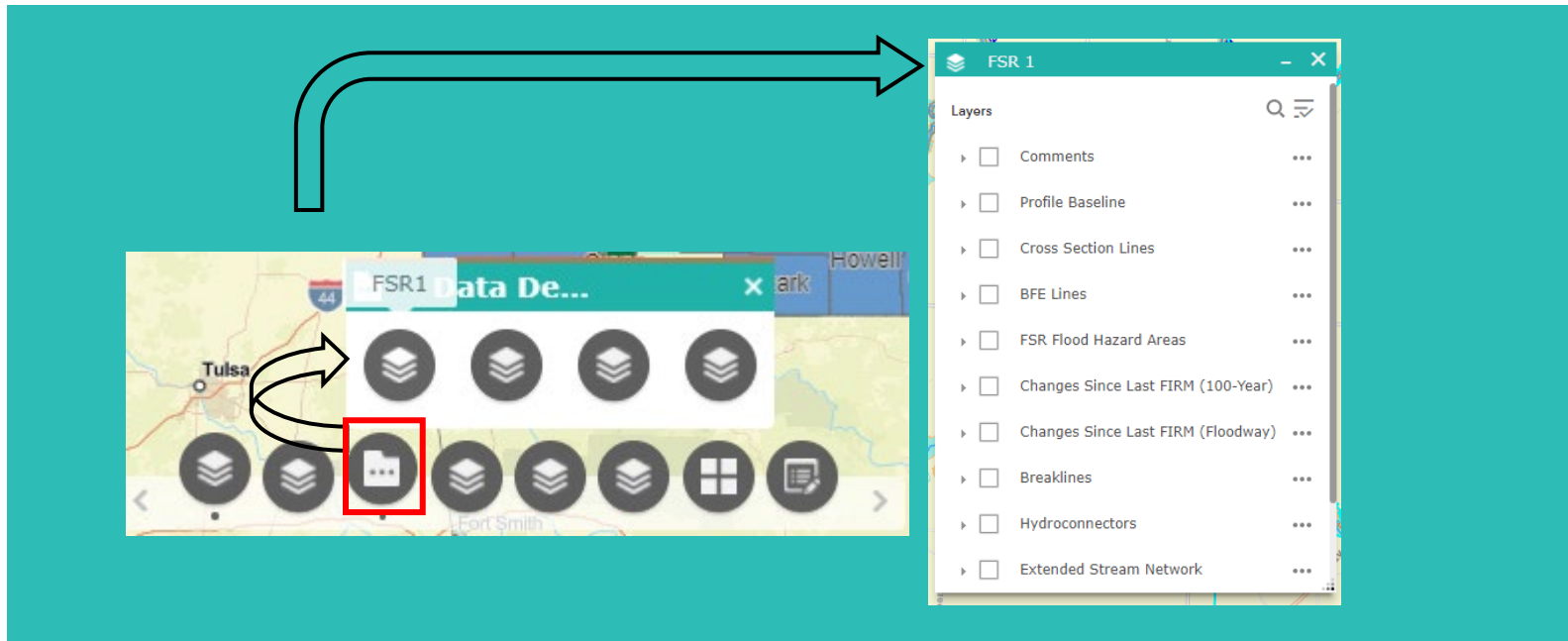
Turn layers on/off by checking the **checkbox next to a layer**. If a layer is turned on the checkbox will appear blue. Expand the layer by clicking on the **arrow next to the Box**. Once expanded, you will be able to see how the layer is symbolized.

\* **If multiple layers are turned on, the layer HIGHER in the Layer order will appear on top on the map.** Here, you will notice that the "Profile Baseline" layer will be placed higher than "Special Flood Hazard Area" on the map.

\* Other Layers that are turned on in other layer lists will also be placed higher, or lower, depending on the list it is a part of. (For example, layers turned on in the Support Data Layer List will fall above Layers turned on in the Preliminary Data List). For this reason, **make sure to turn off all layers in a Layer List before opening a different Layer List.**



## Layer List – Data Development

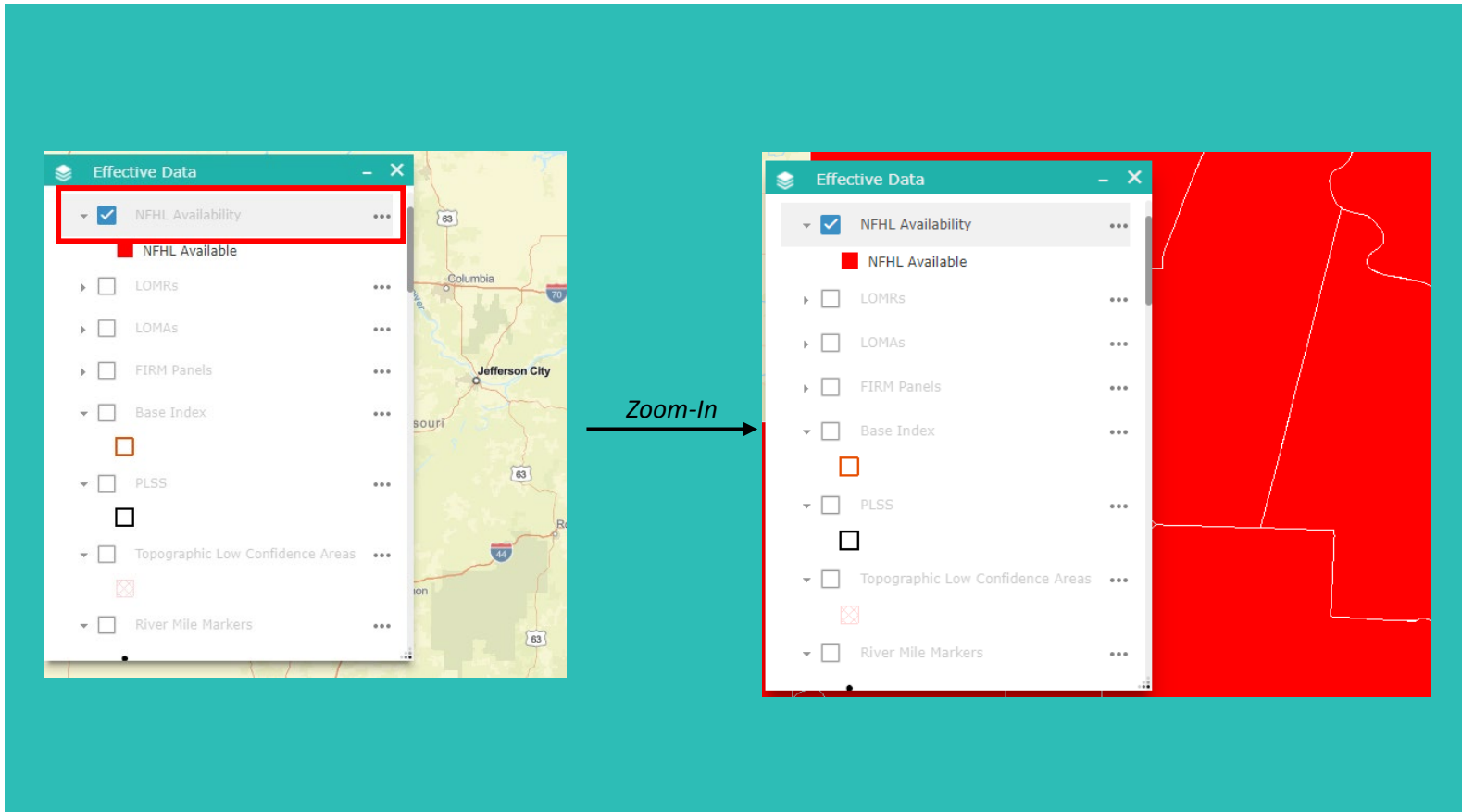


The **Data Development Layer List** contains three separate Layer Lists. Clicking on the **Data Development** Button will reveal the buttons for the FSR 1, FSR 2 and Bootheel FSR 2 Layer Lists.

Clicking on one of these three buttons will open a layer list as shown in the screenshot above.



## Layer List – Layer Zoom Extent



Some layers are set to only turn on once a user has zoomed-in far enough on the map. If you are not zoomed in close enough for a layer to appear, the layer will be shown as **Dulled-Out** in the Layer List. Turning on a dulled-out layer and zooming in far enough will cause the layer to no longer be dulled out and will then appear on the map and in the Legend.

Here you can see that before zooming in the "NFHL Available" layer would not display. After zooming in far enough the layer has appeared on the map.





## Change Basemap

The basemap can be changed by clicking on the **Basemap button** in the center-bottom of the map window. This will open the Basemap Gallery. Here, you can select a new basemap to appear on the map.

When zoomed out at a county or statewide level we recommend using the Streets basemap (the default). When zoomed in closer, the Firefly Imagery Hybrid is recommended for aerial views with labels.



## Enable Pop-ups and Label Options

Click on Feature

(1 of 4)	
FID	3777
OBJECTID	3776
FID_S_Prof	0
DFIRM_ID	29229C
VERSION_ID	2.4.3.5
BASELN_ID	212
WTR_NM	Spence Creek Tributary 1
SEGMT_NAME	Profile Baseline and Stream Centerline
WATER_TYP	Profile Baseline and Stream Centerline
STUDY_TYP	SFHAs WITH LOW FLOOD RISK
SHOWN_FIRM	T
R_ST_DESC	Downstream limit of study
R_END_DESC	Approximately 0.3 miles upstream from downstream
<a href="#">Zoom to</a>	

You may wish to explore more data associated with a specific feature. To do this, you can enable pop-ups for a layer.

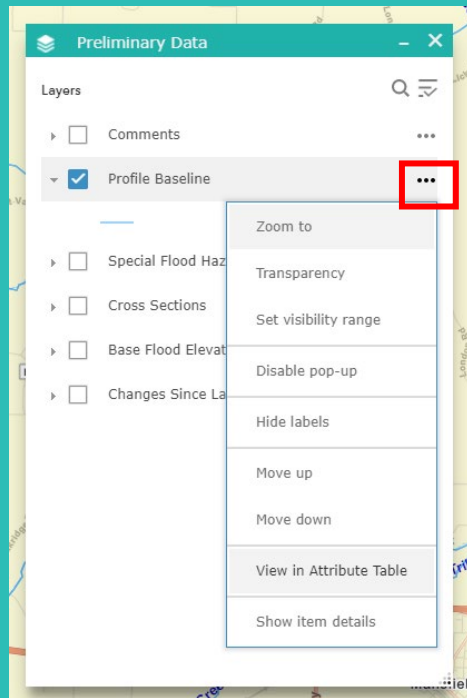
To **enable pop-ups**, click the **Options Button** next to a layer in a Layer List. In the example above, we are turning on pop-ups for the "Profile Baseline" layer. Many Layers will already have Pop-ups turned on. If this is the case the option will read "Disable pop-up."

With pop-ups enabled, clicking on a feature in the layer on the map will bring up a dialog box that displays all the relevant information for the feature.

Other Options can also be enabled for each layer, such as Turning off layer's labels and editing the layers transparency on the map.



## Attribute Table



FID	OBJECTID	FID_S_Prof	DFIRM_ID	VERSION_ID	BASELN_ID	WTR_NM	SEGMT_NAME	WATER_TYP	STUDY_TYP	SHOWN_FIRM	R_ST_DESC	R_END_DESC
6	3	2	29229C	2.4.3.5	2	East Branch	Profile Baseline and Stream Centerline	SFHAs WITH HIGH FLOOD RISK	T		Confluence with Fry Creek	0.7 miles upstream of confluence with Fry Creek
27	4	2	29229C	2.4.3.5	2	East Branch	Profile Baseline and Stream Centerline	SFHAs WITH HIGH FLOOD RISK	T		Confluence with Fry Creek	0.7 miles upstream of confluence with Fry

Another way to explore features contained within a layer is through the attribute table. Open the attribute table for a layer by clicking on the **Options Button** next to a layer in the Layer List and selecting **View in Attribute Table**.

The attribute table displays all the available data for features in the layer. Click the **Filter by Map Extent** button to set the attribute table to only show features of that layer displayed in the map frame.

Select a feature in a layer by clicking on the **area left of the feature** in the attribute table. Double-Click this **area** to zoom to the feature. Select features will display as Blue in the map frame. Deselect features by clicking the "Clear Selection" button on the attribute table



## Adding Comments

After clicking the "New Feature" Box, select the location on the map you wish to place your comment.

Users have the option to add comments on the Missouri SEMA Outreach Website. You may wish to add a comment during specific phases of a project or just as a general comment. The choices are General/Discovery, Modeling Methods & Extents, Flood Study Review, and Preliminary/CCO Meeting.

To add comments, first make sure the **Comments layer is turned on**. This Layer can be found in any of the Layer Lists. Once the comments layer is turned on, click on the **Editor Button** in the center bottom of the map frame. This will open the Edit window. If the comments layer is turned on you will see an option to add a new Feature.

Select the **Feature Box** that best fits the phase you wish to comment on. Next, click on the map frame where you wish to place your comment. This will open a **dialog box** in the location you place the point. In this box, put all necessary comment information. Press Close when you are done adding your comment.



## Layer List Content – Support Data

- ❖ The Support Data Layer list contains statewide layers that provide general information for floodplain mapping projects.
  - Project Status
  - Base map data (political boundaries, roads)
  - Structure data (MSDIS points and building footprints)



## Layer List Content – Data Development

- The Data Development Layer list contains layers during the project phase when data is still draft, before FEMA issues preliminary maps for public comment and appeal.
- FSR1 is data presented at the first Flood Study Review meeting for a community.
- FSR2 is the revised data that may be presented at a second meeting if warranted.
- Community specific data may be posted as needed. For example, layers for a specific region such as the Bootheel or the St. Louis metro area.
- Layers include streamlines, hydroconnectors, breaklines, proposed floodplains, changes since last FIRM, levees, sinks, storage areas, cross sections, and base flood elevation (BFE) lines.



## Layer List Content – Preliminary Data

- The Preliminary Data Layer list contains layers that were used on a community’s preliminary maps issued by FEMA for public comment and appeals.
- Data layers include:
  - Special Flood Hazard Areas (SFHA)
  - Changes since last FIRM
  - Cross Sections
  - Base Flood Elevations (BFEs)
  - Profile Baseline



## Layer List Content – Effective Data

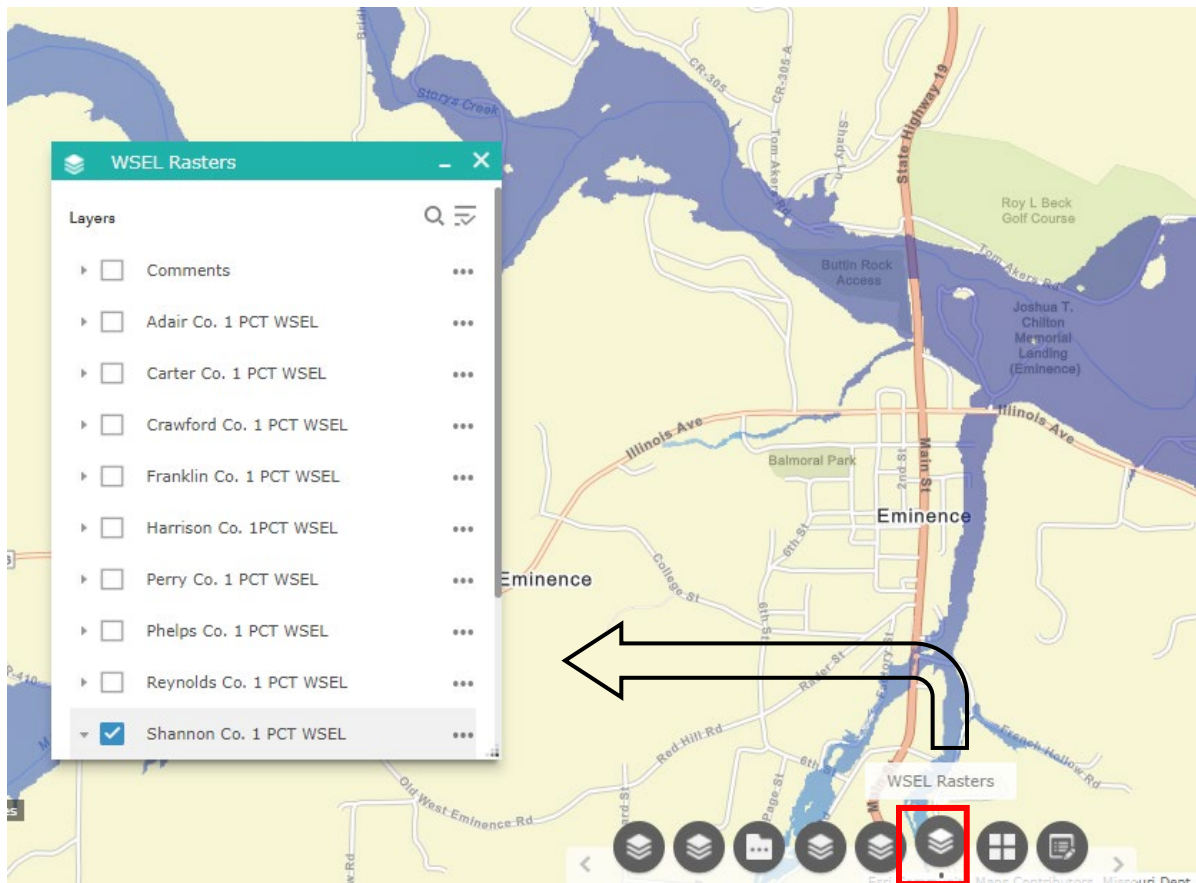
- The Effective Data Layer list contains layers that are part of the National Flood Hazard Layer. These are maps that are currently regulatory effective maps. They are only available for communities with digital flood insurance rate maps (DFIRMs).
- Data layers include:
  - NFHL Availability
  - LOMRs
  - LOMAs
  - FIRM panels
  - Special Flood Hazard Areas (SFHA)
  - Cross Sections
  - Base Flood Elevations (BFEs)
  - Other supplemental data (gages, benchmarks, etc.)





## Layer List Content – WSEL Rasters

- Water surface elevation rasters are available for counties undergoing mapping updates. The rasters provide “point and click” base flood elevations for the 1% annual chance flood zones.



- To use view the grids, turn on the county layer in the layer list, zoom in to the area of interest, click on the area of interest to see the base flood elevation at that point.

